

# **SAFARI SELOUS AND RUAHA**



Tanzania has been the focus of our passion for East Africa for a very long time. It remains a truly exciting country to visit, with some of the best opportunities for safaris in all of Africa.

30% of Tanzania territory is a National Park or Game Reserve. The wildlife is thriving, the landscapes are stunning and the Tanzanians are truly welcoming.

When we talk about Tanzania Tourism we talk about the famous Mt. Kilimanjaro, Ngorongoro Crater, Serengeti, Great Migration, Rift Valley or the spice Island of Zanzibar.



Figure 1 - Africa and Tanzania



During this safari you explore Southern Circuit National Parks in Tanzania: Selous Game Reserve and Ruaha National Park. Those parks are still unspoilt and full of wild animals all the year.

Figure 2 – Tanzania National Parks

You can get more info on [“Info Safari Doc”](#) (weather, VISA, clothes etc.).



Figure 4 - Welcome to Tanzania

## **Program Description**

The safari can start and finish in Arusha or Dar Es Salaam or Zanzibar airport.

Depart from Arusha/Dar Es Salaam/Zanzibar airport to **Selous Game Reserve** and 3 nights game package at the lodge or tented camp.

Departure from **Selous Game Reserve** to **Ruaha National Park** and 3 nights game package at the lodge or tented camp.

Departure from **Ruaha National Park** to Arusha/Dar Es Salaam/ Zanzibar.

## **DETAILED PROGRAM**

### **DAY 1 – Dar Es Salaam to Selous Game Reserve**

**Activities:** game drive or boat safari or walking safari.

**Program:** We leave from Dar Es Salaam domestic airport by Coastal flight to **Selous Game Reserve**. We land inside the park. Our guide is waiting for us and we have a game drive on the way to the tented camp or lodge. Lunch at the tented camp/lodge. In the afternoon we can choose our activity (game drive, walking safari or boat safari).



Figure 4 – Lioness in Selous

**Accommodation:** Dinner and overnight at **Lake Manze Camp**.

### **DAY 2 and DAY 3 – Selous Game Reserve**

**Activities:** game drive, boat safari, walking safari.

**Program:** We spend these full days discovering and exploring Selous Game Reserve. We can choose the activities we prefer (game drive, walking safari or boat safari).

The **Selous Game Reserve** is Africa's largest protected wildlife Reserve and covers more than 5% of Tanzania's total area. Its rivers, hills, and plains are home to roaming elephant populations, the area's famous wild dogs, and some of the last black rhino left in the region. The Rufiji River Delta is a striking feature of the game reserve. It connects the Great Ruaha River with the Rufiji River and not far from the park boundaries empties out into the Indian Ocean along the Tanzanian Coast. The Rufiji River is the largest water catchment locations in the region, and as such, is home to a plethora of varied water and bird life. Along its shores, oppulent hippos sleep languidly in the mud and sun themselves, mouths wide open, as the river passes by. Crocodiles are also common along the Rufiji's riverbanks, their armour plated skins the only rough edges in the rivers incessant flow. Stiggler's Gorge, where the Great Ruaha River meets the Rufiji River, is a breathtaking example of the diversity and spectacular scenery along the game reserve's waterways.

**Accommodation:** Dinner and overnight at **Lake Manze Camp**.

#### **DAY 4 – Selous Game Reserve to Ruaha National Park**

**Activities:** game drive or walking safari

**Program:** We leave Selous Game Reserve by Coastal flight to Ruaha National Park. Again we land inside the park and our guide is waiting for us. Game drive on the way to the lodge/tented camp and hot lunch. In the afternoon you can choose the activity you prefer like another game

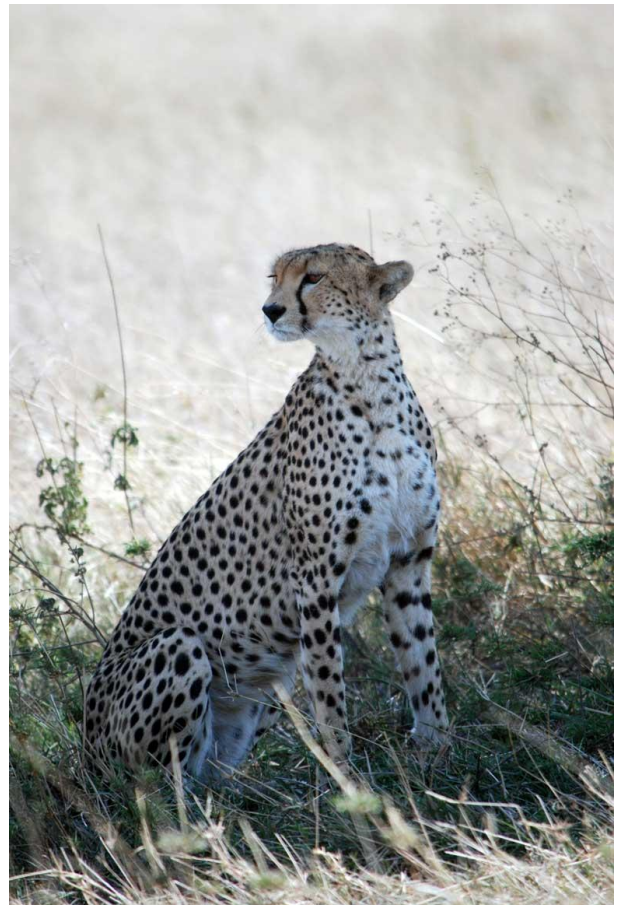


Figure 5 – Cheetah in Ruaha

drive or a walking safari.

**Accommodation:** Dinner and overnight at **Mdonya River Camp**.

## **DAY 5 and DAY 6 – Ruaha National Park**

**Activities:** game drive

**Program:** We spend these full days discovering and exploring **Ruaha National Park**. We can choose the activities we prefer (game drive or walking safari).

Ruaha lies 130 kilometers west of Iringa town. Its name derived from the Great Ruaha River, which flows through it creating spectacular gorges and scenery. Hippos, crocodiles, turtles and fish inhabit the river. The park is also known for its sable and roan antelopes, and its rich bird life. With herds of more than 10,000 elephants, vast concentrations of buffalo, gazelle, and over 400 bird species, Ruaha's limitless wilderness, together with the surrounding game reserves of Rungwa and Kisigo stretches over 40,000 square kilometres.

Elephants are found in some of the highest concentration in the country, travelling in matriarch-lead herds through ancient grazing lands and seasonal supplies of water. The Great



Figure 3 - Elephants in Ruaha

Ruaha River is the main feature of the park, and meanders through its borders. On its banks, the game viewing is spectacular, whether done by land or by water. Hippos yawn under the midday sun and crocodiles lie lazily along the banks. Fish eagles dive and swoop along the riverbanks, and at night the sound of frogs croaking happily in the reeds extends across the hills and plains.

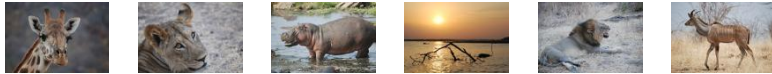
**Accommodation:** Dinner and overnight at **Mdonya River Camp**.

## DAY 7 – Dar Es Salaam

**Activities:** game drive

**Program:** After breakfast we have last game drive on the way to the airstrip. We fly back to Dar by Coastal flight.

Contact our office for a quotation  
[info@savannahexplorers.com](mailto:info@savannahexplorers.com)



*The price includes transfers listed in the program, guide (English speaker), parks fees and shared safari activities, full board with some picnic lunches during the safari.*

*AMREF Flying Doctors insurance for air medical evacuation service (1000 Km radius).*

*The price does not include the international flights, VISA, drinks at lodges/tented camps, laundry service, tips, personal expenses and all what is not explicitly included.*

For more details see "[booking conditions](#)" on our website.